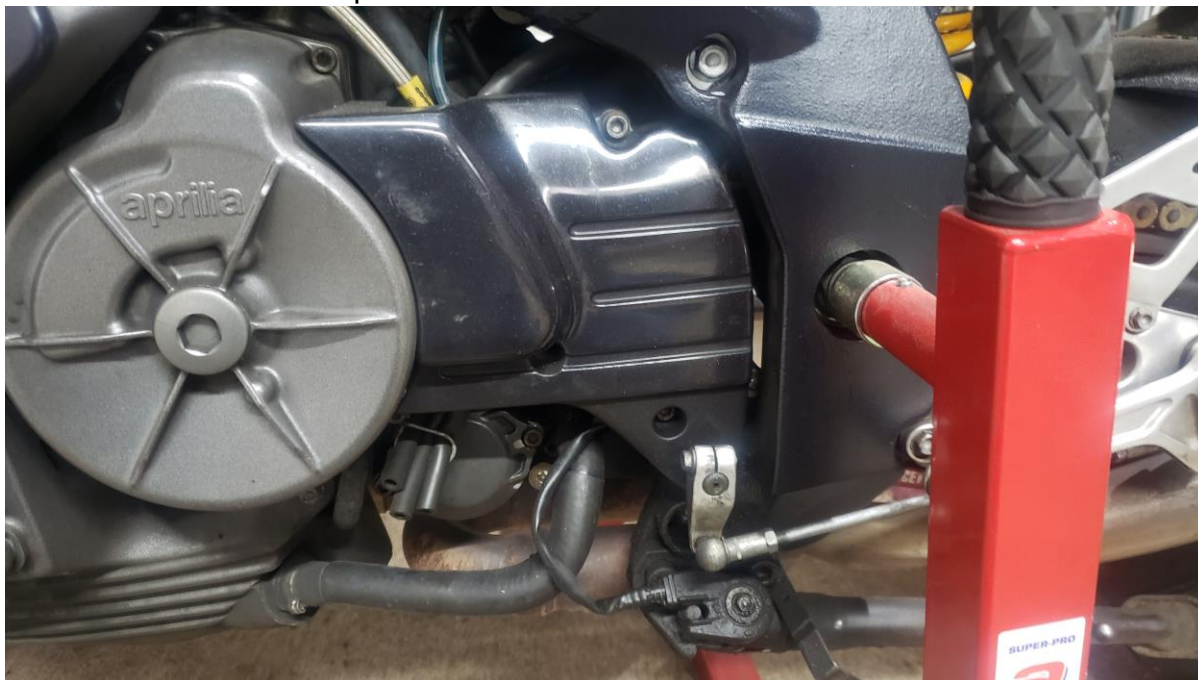


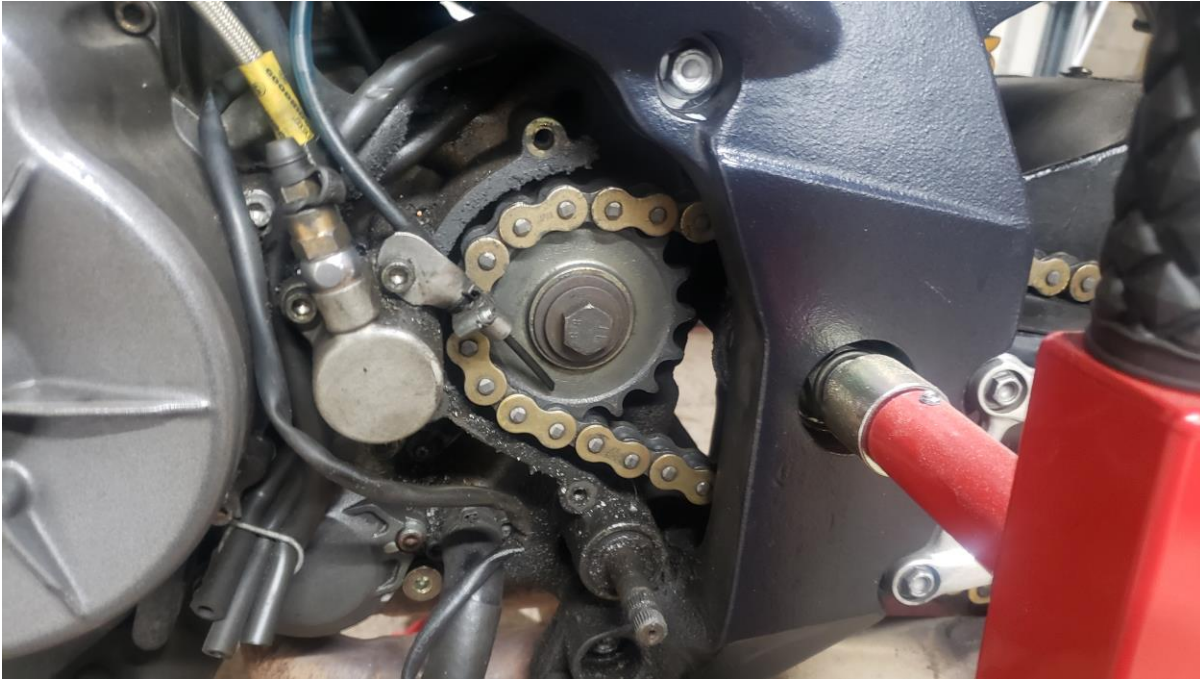
This is the standard setup on the Falco



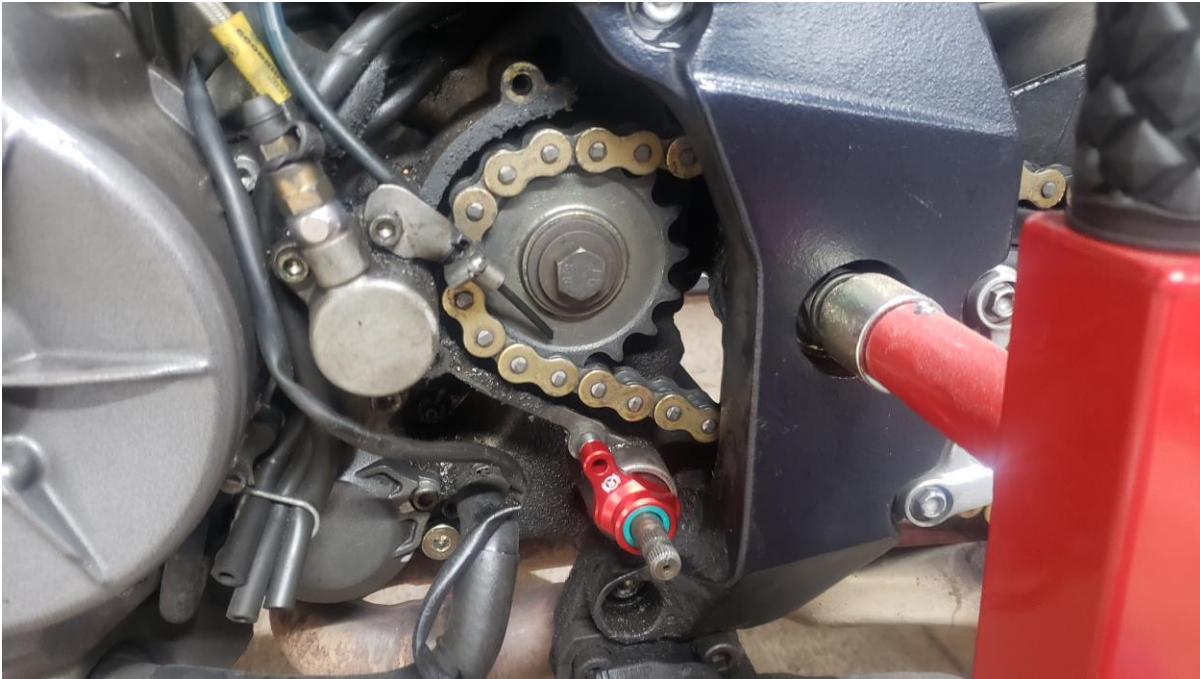
Cover loosened and the gear arm removed



Sprocket cover removed, note I have a Scottoiler delivering to the front sprocket



Test fit of support bearing. Fits perfectly on the shaft and bolt hole lines up exactly.



Support bracket on O/E cover to demonstrate what needs to be trimmed



1st cut away a little of the web and take the narrow section off the bolt channel



Then I used a step drill to reduce the lip on the O/E shaft hole



Test fit, still needs adjustment



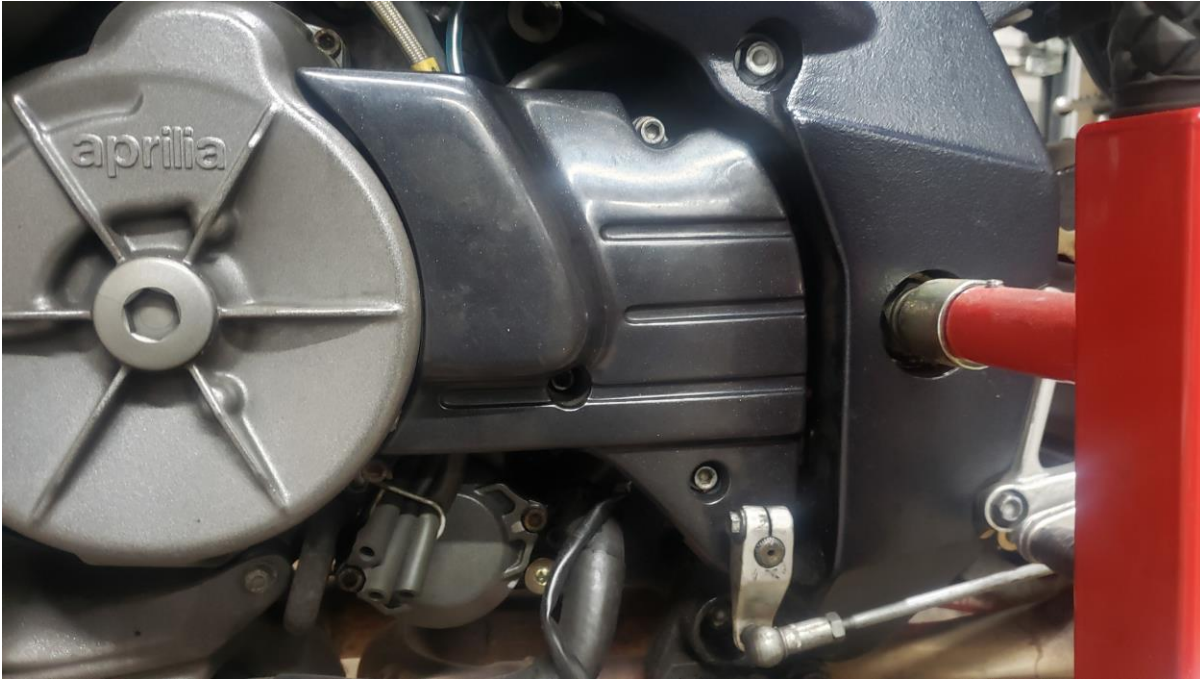
I had to open up the bolt channel completely using a step drill and cut a channel to accommodate the support bracket.



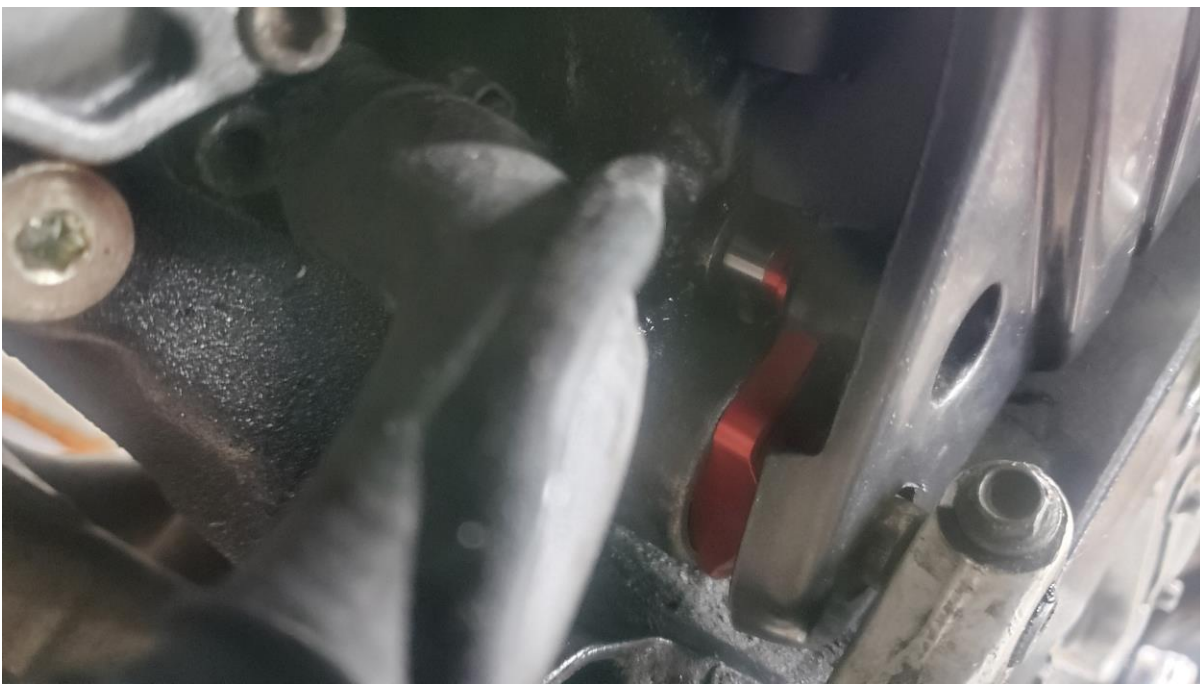
Bracket mounted



The finished fit. The bottom bolt no longer holds the O/E cover in place. You'd be hard pressed to know the support was there.



From below



The only tools used (apart from those to remove the cover were

- a step drill to reduce the lip on the inside of the cover
- a Stanley knife to cut the thin web
- a hacksaw to remove the thin part of the bolt channel
- a smaller step drill to open up the wider part of the bolt channel
- a Stanley knife to cut the notch in the bolt channel